

- Error counters (content, transport)
- Statistics on view (channel viewing time, channel ratings)
- Support of UDP and HLS protocols
- Operation with or without middleware of our partners
- Grouping devices by different criteria



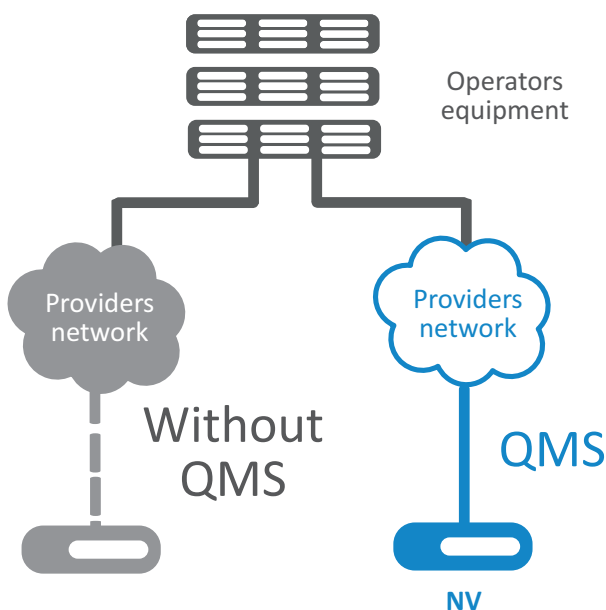
Eltex.QMS

The Eltex.QMS monitoring and statistics system enables real-time control of content parameters, content delivery, and playback. The Eltex.QMS system saves the time and money you could spend for troubleshooting of quality issues of the provided services.

The system allows you to collect statistics for each STB device and each broadcast channel.

Media-Transparent Network

The Eltex.QMS system allows you to control the service quality up to the media centre and dramatically simplifies troubleshooting of the issues, which might cause user calling to the technical support. The continuous monitoring is especially important for a wireless local network as it is more sensitive to the interference caused by other equipment.



Components:

1. Client end

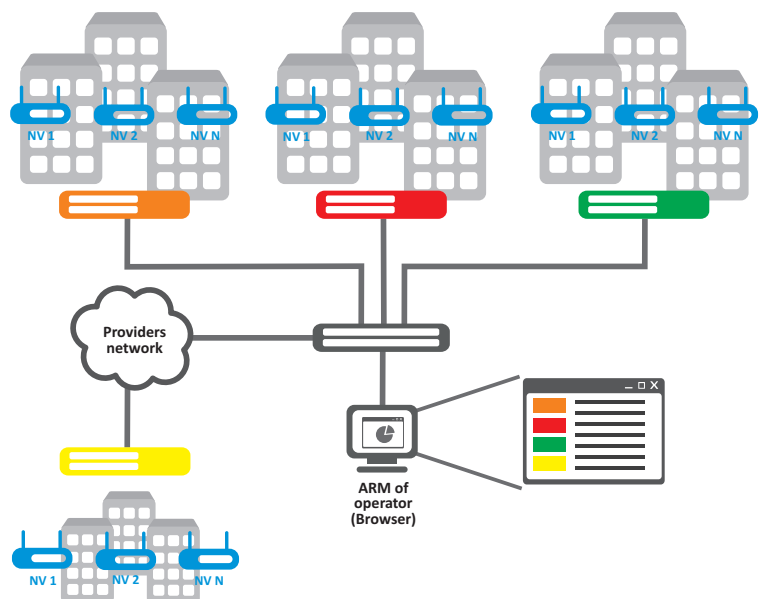
It is integrated to the subscriber's set-top box. It reads parameter values and reports to the server according to a schedule or when a status changes. The required parameters can be displayed on TV screen if needed (for example, if you need to report the values to an operator of technical support).

2. Server platform

Collects, accumulates, and processes subscribers' data.

3. Statistical and analytical system

Shows the monitoring results on graphs and in tables and allows data export to a file.



CLIENT

Accumulates and analyses error counters, collects statistics of channel views. A universal system that supports both UDP and the widely used HLS adaptive streaming protocol. The counters are implemented on the system level and make maximal use of set-top box hardware to get representative results.

Types of counters

UDP

1. An unsynchronisation counter (packets arrive irregularly).
2. An IGMP re-routing counter (stream loss).
3. A counter of lost Ethernet packets.
4. A counter of stream continuity errors (content).

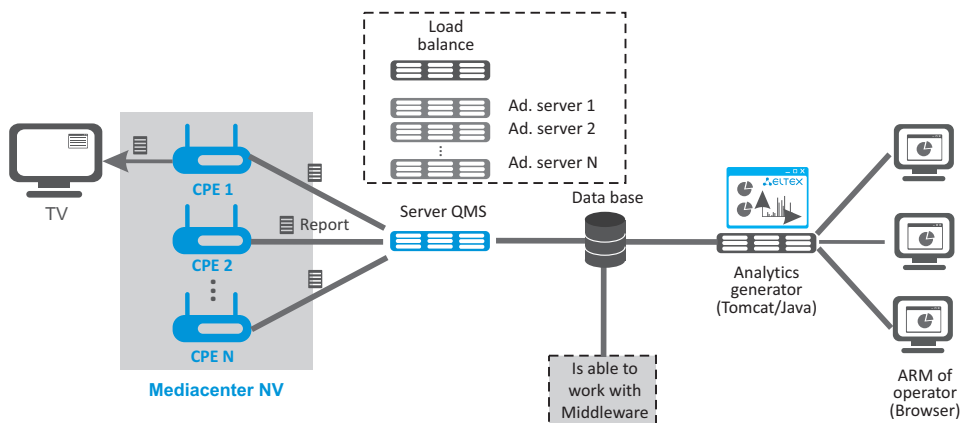
HLS

1. Segment download mean time.
2. Segment download maximum time.
3. Playback buffer free space.

SERVER

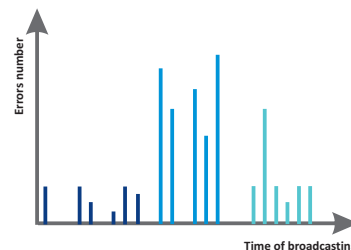
The Eltex.QMS server allows reports from subscribers' set-top boxes to be processed and collected in a single database, which is used for further statistical processing.

The Eltex.QMS server is a set of packages for Linux OS. The system is launched in the operator's network in the background mode and does not require any restrictions of service provision.



ANALYTICS AND STATISTICS

The QMS system provides a handy visualisation tool. Both technical support and marketing staff of the operator will find it useful. In addition to technical information, it also shows statistics of channel views in order to determine the subscribers' preferences. Graphs and tables allow subscriber devices to be grouped by different criteria.



About Company

Eltex Company is leading Russian developer and manufacturer of telecommunications equipment with 20 years of history. Integrity of solutions and seamless integration capability into customer infrastructure is priority area of company development

Contact us



+7 (383) 274 10 01
+7 (383) 274 48 48



eltex@eltex.nsk.ru



www.eltex.nsk.ru